

YONGJIN FIRE FIGHTING

广州市昶進消防设备有限公司





YONGJIN FIRE FIGHTING

Email: yongjinfire@gmail.com



INTRODUCTION

OUR COMPANY was established in 2006, which specialized in manufacturing and import fire fighting equipment.

We have many products to all over domestic market such as: dry power fire extinguishers, carbon dioxide fire extinguishers, water and foam fire extinguishers, emergency – exit lights, fire buttons, fire alarms, fire alarm bells, indoor-outdoor fire hydrants, fire blankets, fire fighting clothing and others.

Our products always have Certificate of Origin – Certificate of Quality and Accreditation of State.

Good quality and best service as well as many years of experience, we are complete confident and willing to cooperate - transact with partners and customers with hope to together development.

Want to further information, please contact and feedback with us.



BC/ABC Dry Powder Fire Extinguishers



Type	MFZ1	MFZ2	MFZ4	MFZ8
Fire Rating	9B	9B	9B	24B
Out-diameter	Ø90mm	Ø110mm	Ø130mm	Ø163mm
Height	330mm	380mm	480mm	565mm
Working Pressure	14 bar	14 bar	14 bar	14 bar
Test Pressure	27 bar	27 bar	27 bar	27 bar
Range of Throw	≥3m	≥3m	≥3,5m	≥4,5m
Discharge Time	≥8s	≥8s	≥13s	≥15s
Working Temperature Range	20°C - 55°C	20°C - 55°C	20°C - 55°C	20°C - 55°C



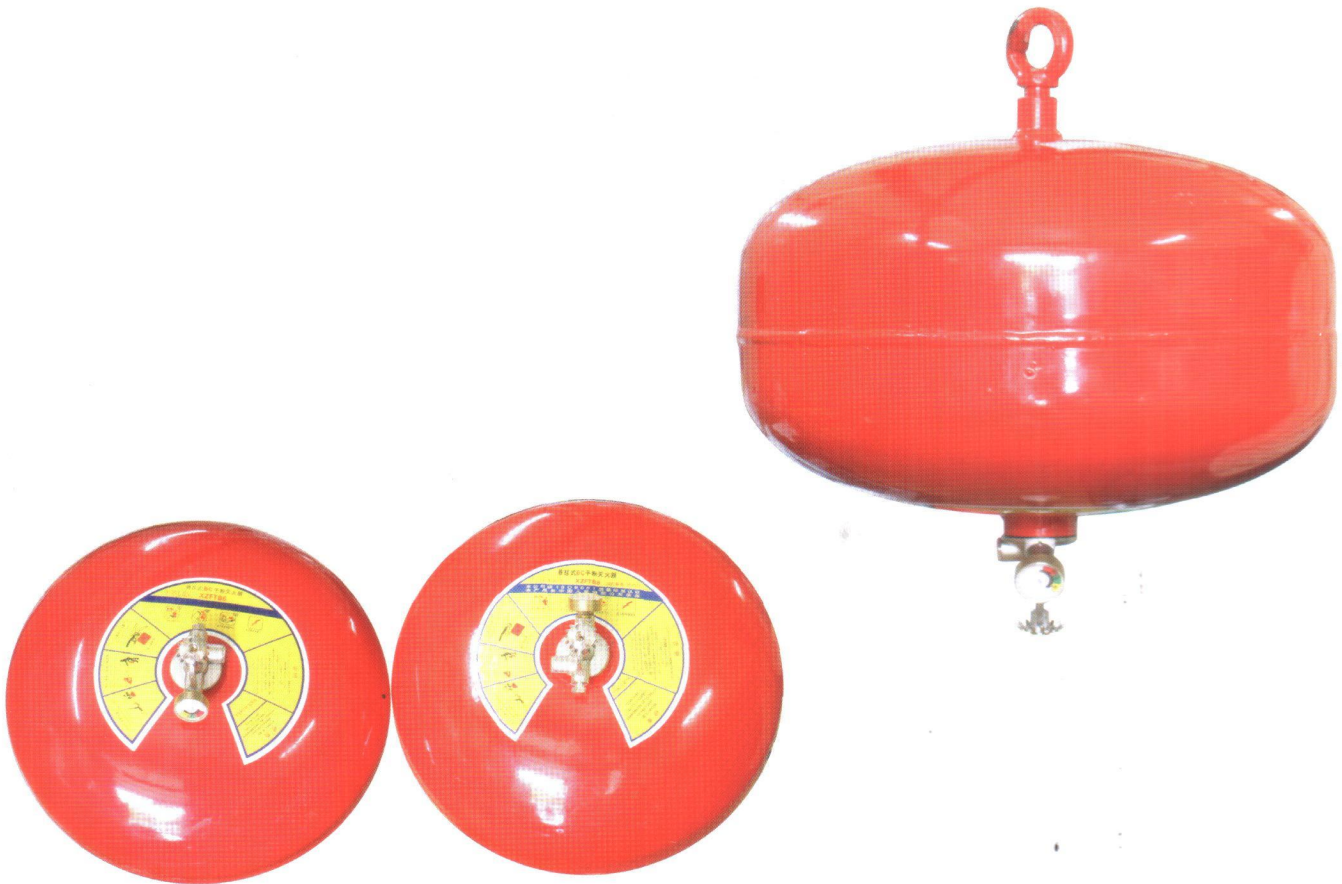
CO2 Fire Extinguishers



Type	MT2	MT3	MT5	MT24
Fire Rating	21B	21B	34B	3B
Out-diameter	Ø114mm	Ø133mm	Ø152mm	Ø460mm
Cylinder	380mm	410mm	500mm	1140mm
Bursting Pressure	17,5 - 22,5MPa	17,5 - 22,5MPa	17,5 - 22,5MPa	1,2MPa
Range of Throw	≥2m	≥2m	≥2,5m	≥4m
Discharge Time	≥5s	≥5s	≥5s	≥20s
Spray Surplus Rate	≤ 15	≤ 15	≤ 15	≤ 10
Working Temperature Range	10°C - 55°C	10°C - 55°C	10°C - 55°C	10°C - 55°C



BC/ABC Automatic Fire Extinguishers



TECHNICAL SPECIFICATIN

Type	XZFTB6	XZFTB8
Out-diameter	Ø270mm	Ø300mm
Cylinder Height	205mm	225mm
Cylinder Weight	2.5kg	2.9kg
Working Temperature Range	30°C - 60°C	30°C - 60°C
Max Working Pressure	14 bar	14 bar
Test Pressure	25 bar	25 bar



Fire Foam Extinguishers



TECHNICAL SPECIFICATION

Type	500ML	1000ML	1KG	2KG	9KG	50KG
Fire Rating	5A 13B	5A 14B	5A 21B	5A 21B	30A 180B	10A 210B
High-Approx	257mm	267mm	295mm	400mm	1800mm	2900mm
Shell-Approx Dia	Ø74mm	Ø74mm	Ø89mm	Ø110mm	Ø595mm	Ø1140mm
Working Pressure	12 bar	12 bar	12 bar	12 bar	12 bar	12 bar
Test Pressure	25 bar	25 bar	25 bar	25 bar	25 bar	25 bar
Range of Throw	3m	3m	3m	3m	3m	3m
Discharge Time	6s	6s	9s	15s	15s	15s
Working Temperature Range	5°C - 55°C	5°C - 55°C	5°C - 55°C	5°C - 55°C	5°C - 55°C	5°C - 55°C



Fire Foam Tank

Volum (L)	500	100	1500	2000
Volum (L/S)	38	616	1232	1232
Weight (kg)	490-500	700	950	1200



BC/ABC Fire Extinguishers



TECHNICAL SPECIFICATIN

Type	MFTZ35
Fire Rating	45B
Out-diameter	Ø460mm
Height	920mm
Bursting Pressure	1.2MPa
Range of Throw	≥6m
Discharge Time	≥5s
Spray Surplus Rate	≤10
Working Temperature Range	20°C - 55°C

Dry Powder Fire

Dry Powder Fire	BC	ABC
Gross Weight (KG)	25	25





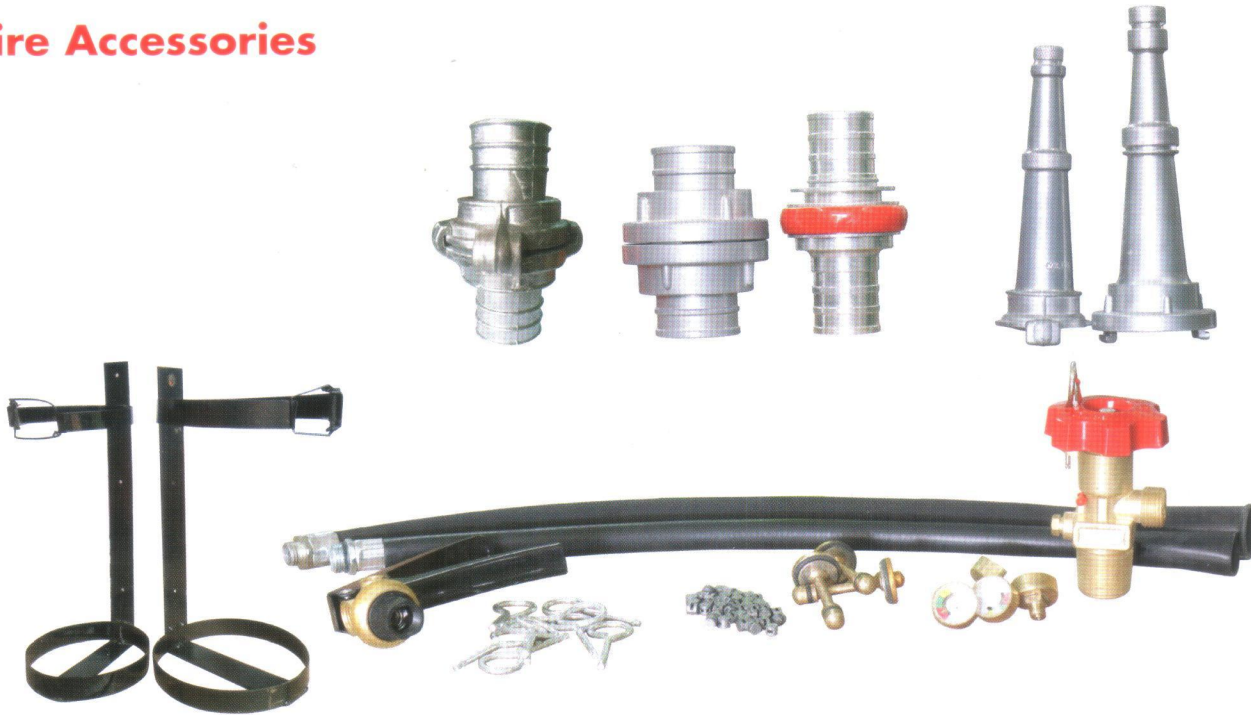
Fire Hose



ORIGIN	TECHNICAL SPECIFICATION		
	Pressure	Bore	Material
China	10 BAR - 20m/30m	50	RUBBER/HESSIAN
		65	RUBBER/HESSIAN
China	13 BAR - 20m/30m	50	RUBBER/HESSIAN
		65	RUBBER/HESSIAN
Standard Korea	13 BAR - 20m/30m	50	RUBBER/HESSIAN
		65	RUBBER/HESSIAN
Germany	16 BAR - 20m/30m	50	RUBBER/HESSIAN
		65	RUBBER/HESSIAN



Fire Accessories



FIRE NOZZLE

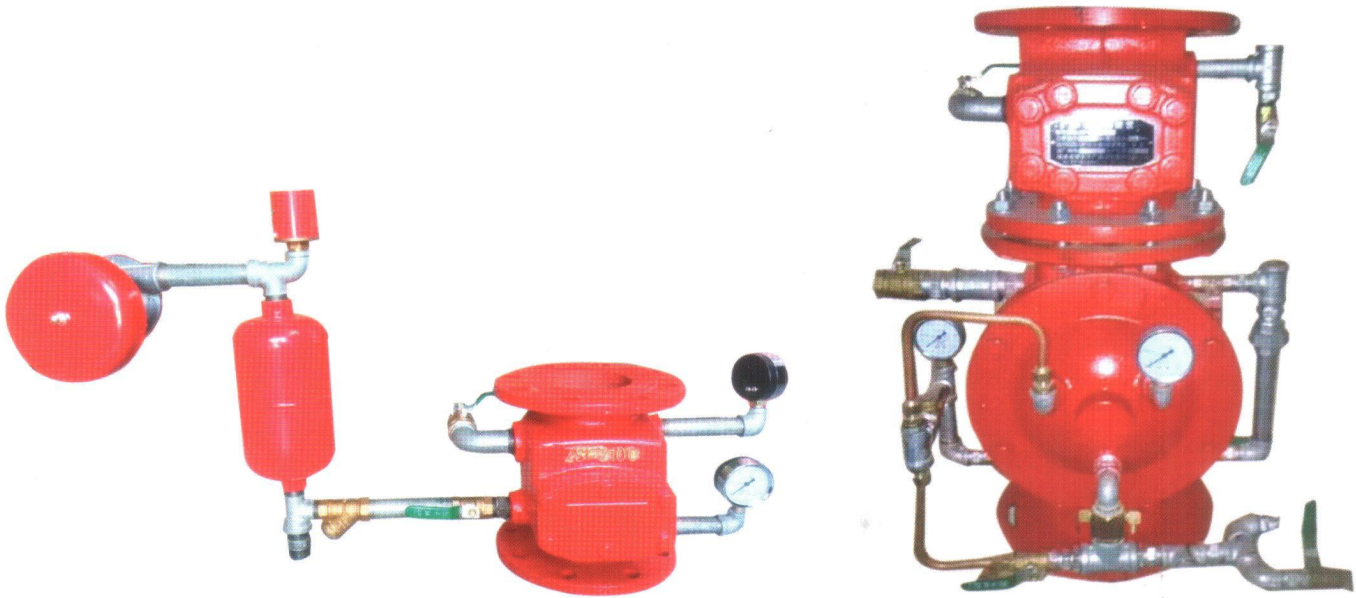
INSPECTION ITEM	STANDARD
APPEARANCE QUALITY	MUST BE ACCORDING TO THE GB8181-2005.1
MARK	MUST BE EMBOSSED THE MODEL KD
MATERIAL	ALUMINUM
FLOW RATE (L/s)	5 X 1±8%
RANGE (M)	≥25
JET PRESSURE (MPA)	0.35

COUPLING

INSPECTION ITEM	STANDARD
APPEARANCE QUALITY	MUST BE ACCORDING TO THE GB12514.1
MARK	MUST BE EMBOSSED THE MODEL KD
SEALABILITY	DOES NOT LEAKING UNDER PRESSURE OF 0.3MPA
	DOES NOT LEAKING UNDER NOMINAL PRESSURE
HYDRAULIC PRESSURE TEST	THE COUPLING ISN'T CRACKING AND BROKING UNDER THE PRESSURE OF 1.5TIMES OF NOMINAL PRESSURE, CAN ALSO NORMALLY USED AFTER TESTING



Alarm Valve And Deluge Valve



TECHNICAL PARAMETER OF ALARM VALVE

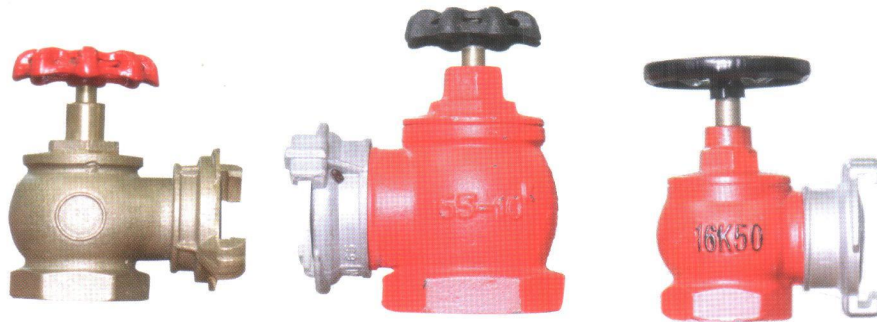
Model	DN (mm)	Sealing Test (Mpa)	Rated Working Pressure (Mpa)	Alarm Follower Q(l/min)	Retarding Alarm Time (s)	Alarm Bell Start Pressure (Mpa)	Friction Resistance (Mpa)
ZSFZ80	80	2.4	1.2	15<Q≤60	5-90	≤0.035	≤0.04
ZSFZ100	100						
ZSFZ150	150						
ZSFZ200	200						

TECHNICAL PARAMETER OF DELUGE VALVE

DN	Flange Diameter D	Flange Screw Holes Center D0	Body Height H	Screw Hole Diameter z-d	Applicable Studs	Width B	Length A	Height L
100	215	180	305	8-18	M16X80	450	650	600
150	285	240	406	8-22	M20X85	500	760	680
200	340	295	521	12-22	M20X95	650	800	780



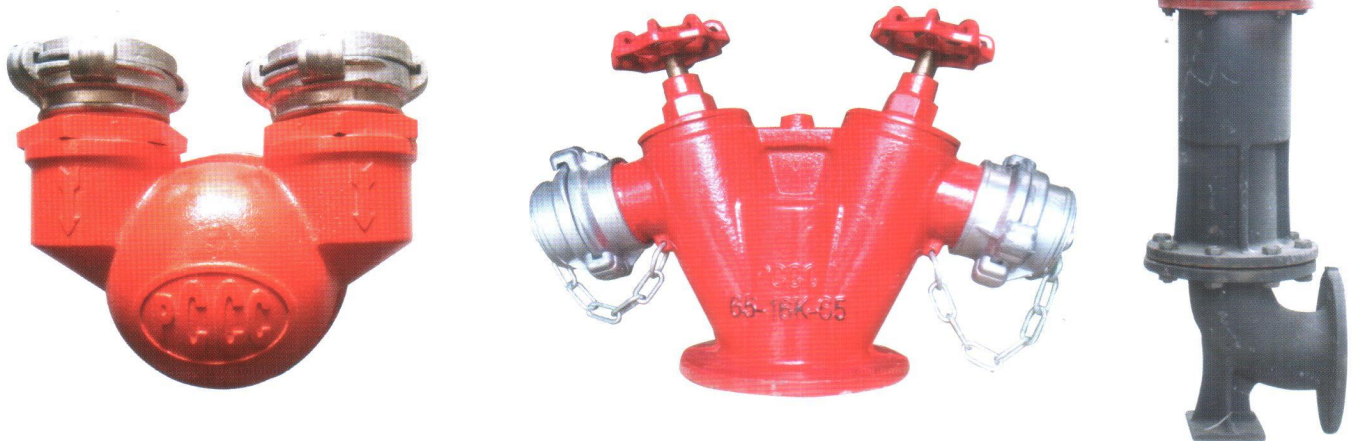
Indoor fire hydrant



Size	DN50	DN65
Material	Copper Iron/ Brass	
Test Pressure	15 bar	
Working Pressure	8 bar- 10 bar	
Color	Red	

Outdoor fire hydrant

Model	SJ
Material	Cast Iron
Color	Red
Working Pressure	10 bar



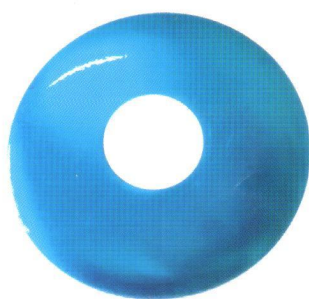


Fire Sprinkler



Model	Installation Method	Nominal Operating Temperature	Maximum environment Temperature	Nominal Diameter	Working Pressure	Glass ball Diameter
ZSTZ15	Upright	68°C	38°C	15mm	12MPa	Ø5mm
ZSTX15	Pendent	68°C	38°C	15mm	12MPa	Ø5mm
ZSTZ20	Upright	68°C	38°C	20mm	1.2MPa	Ø5mm
ZSTX20	Pendent	68°C	38°C	20mm	1.2MPa	Ø5mm

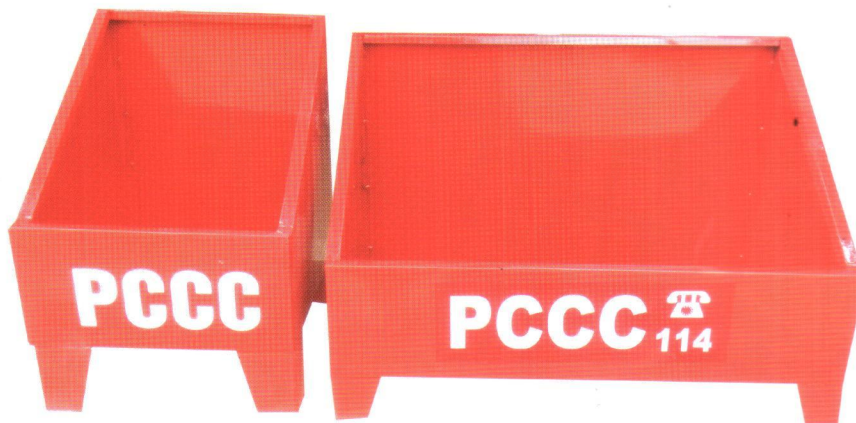
Fire Sprinkling Decorative Plate



Product	Model	D1(mm)	D2(mm)	H(mm)	Applicable Sprinkler Size
Monolithic Sprinkling Decorative Plate	ZSTP 15	Ø68mm	Ø22	5	DN15
	ZSTP 20	Ø68mm	Ø26	5	DN20
Adjustable Sprinkling Decorative Plate	ZSTPK15	Ø72mm	Ø22	14	DN15
	ZSTPK20	Ø72mm	Ø26	14	DN20



Fire Glass Cases



Size	400x600; 500x700, 450x650, v.v...
Material	Aluminium/ Inox
Thickness	6 zem, 8 zem, v.v...
Color	Red



Fire alarm



Voltage Range

12V DC

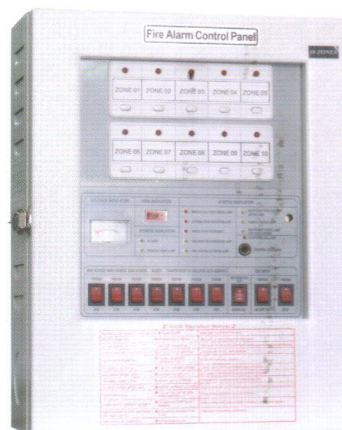
24V DC

Fire Alarm Bell 4 inch-6 inch



Model	Type	Voltage Range	Movement	Material	Dimentions	Weight	Color
CM-FB4	24V DC	35mA	Motor	1.8mm Steel Sheet	Ø4" (102mm)	340g	RED
CM-FB6	24V DC	35mA	Motor	3.0 Alloy Alu	Ø6" (150mm)	418g	RED

Fire Alarm Control Panel



Model	Wall Mounting Type					
CIRCUIT NO.	5L-10L	15L	20L	25L-30L	35L-40L	45L-50L
H (mm)	400	495	580	520	580	700
W (mm)	300	300	300	480	480	480
D (mm)	120	120	120	180	180	180



Fire Resistant Clothing



Working Temperature

800°C

1000°C

Fire Escape Hood



Service Life	Inhalation Resistance	Exhalation Resistance
40 minutes	<800Pa	<300Pa

Fire Blanket



Length	Wide
1.8m	1.8m



Foam Sprinkler

Brief information:

The foam sprinkler is a special fire extinguishing parts mainly used in low-expansion foam spraying system which can produce and jet air bubble. When the mixture foam liquid through the pipeline to foam sprinkler, the the foam sprinkler outlet will inhalation air to formation air foam, spray on the protection area to extinguishing fire.

Working principle:

when a certain pressure of foam mixture by bubbleshower nozzle lumen, due to the throttle, make Velocity increases, pressure decreases, and the formation of negative pressure, intake air, the nozzle away within the function, form a A multiple of air bubbles.

Foam Sprinkler



◆ Technical parameters						
Size	Working pressure MPa	Flow of mixture liquid L/S	Flow parameter L/S	Foam expansion Times	Installation height m	Connecting thread R
PTW0.9	0.3-0.6	0.9	27	≥6	≥2.5	R 1/2"
PTW1.2		1.2	36			R 3/4"
PTW1.5		1.5	45			R 1"
PTW1.75		1.75	53			